

~ The Inter-War Years ~

1922

Branch of County Free Library opened (in school)
Boys over 11 years to attend school in Wimborne
Colehill Regimental Jazz Band in existence

Parish Records:

Report that Wimborne Urban District employees had thrown out Colehill Parish Council records from a store in the Wimborne Offices into an adjoining garden where they were 'left exposed to the rain and weather. The papers were blown all over the garden.' *Minutes of 2nd January, 1922*

1925

Girl Guide company registered

Footpaths

A Special Meeting was held on the obstruction of a bridlepath on Cannon Hill and the closure and diversion of a fifty year old right of way by Mrs. Oldfield of Uddens. No action was taken. *Minutes of 11th May, 1925*

1926

Boy Scout troop started and later a Scout Band
First motor-bus service began - on Saturdays only
Population 1478

'Of late years the parish had changed from purely rural to semi-urban' *George Langer, Chairman of the Parish Council*



Muriel Smart, 1st Colehill Guide Company, 1929

Reg Shiner, cobbler, outside his workshop (still standing) at the back of his house in Holmsley Villas, Middlehill Road c.1930



*Frank Barrett, driving his baker's van c.1922
His baker's and grocer's shop was also the Post Office from 1897*

Votes for Women:

Miss Mabel Digby of 'Highwood' became the first woman on the Council in the year that all women over 21 years gained the vote. *Minutes of 12th March, 1928*

1928

Minutes recorded complaints of 'excessive speed by motor vehicles on the village roads.'

Wimborne Road and Middlehill Road surfaced with coal tar. Other roads still had gravel surfaces.

Redundant clay pit for Coombes brickworks (Smugglers Lane, near Church) used as Council's rubbish tip.

Forestry Commission acquired Cannon Hill and stopped a footpath and bridleway.

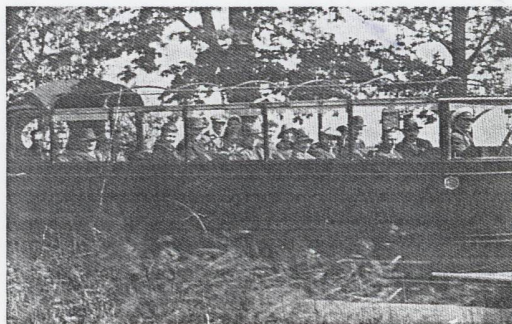
© Priest's House Museum



The first six Council houses built at 63-73 Middlehill Road 1929

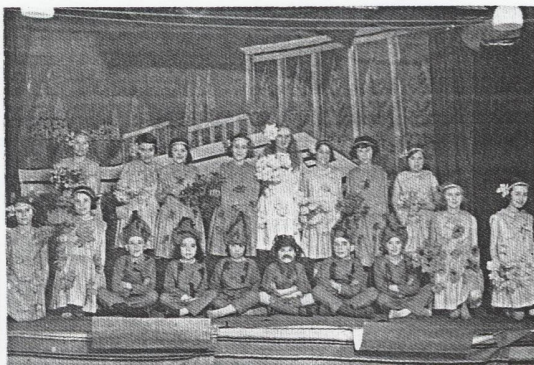
1930

By this date competition between bus companies had led to a return ticket from Wimborne to Bournemouth costing 6d (2½p)



Church charabanc outing c.1930

~ The Inter-War Years ~



Middlehill School Pantomime, performed in the Church Hall 1932

1934

Girls over 11 years to attend school in Wimborne. Some went 'on strike' for many weeks as the authorities refused to supply transport.

Boundaries

Proposal to form new Urban District Council combining Colehill, West Parley and Colehill. *Minutes of 1934*

The Jockey House

Complaints were made to the Council about the noise from motor cars between 11 p.m. and 3 a.m. by customers of the Jockey House 'Roadhouse'. *Minutes of 1934*

1935

- School taken over by Dorset County Council
- Resistance to attempts by Wimborne Urban District Council to encroach upon Colehill's territory.
- Tipping of rubbish on Leigh Common still causing concern.
- Leigh pond fouled by drainage and sewage from Wimborne.
- Council still rejected street lighting by gas or electricity.
- Main drainage and refuse collection discussed until the matters were shelved at the outbreak of war 'for the duration.'

Coronation Medals

A circular from the Ministry of Health concerning the supply of Coronation medals was read but no action was taken thereon. *Minutes of 14th April, 1937*



Middlehill School (Post war extension to the right).

© Priest's House Museum

Unemployment:

In reply to a request from the Rural District Council to help in funding work for the unemployed, the Council stated that repairs to footpaths had been done by an unemployed man. *Minutes of 4th January, 1933*

Postal Services:

The Postmaster, Wimborne, asked if the Council would object to the suspension of evening collections on Saturdays 'with a view to affording Postmen a half day holiday.' This was unanimously agreed to. *Minutes of 5th July, 1933*



The Jockey House 'Roadhouse', formerly the Horse and Jockey Public House, opposite Leigh Common

George V Silver Jubilee Celebrations

'A house to house collection had raised £49 2s 1d for participation in the Wimborne celebrations. A half-penny Parish rate would be raised if necessary.' *Minutes of 17th April, 1935*

George VI Coronation Celebrations:

'It was agreed to join with Wimborne for Coronation celebrations in May 1937.' *Minutes of 16th November, 1936*

Preparation for War

The Council was asked to forward names of those willing to be enrolled in classes in instruction for Air Raid Precautions. *Minutes of 7th July, 1937*

1937

Discussion on creation of public recreation ground but in spite of land for sale and possible grant, no action taken.

1938

Discussion on road hazard at cross-roads at church.

Refuse Collection

Proposed refuse collection by the Rural District Council was rejected. 'In the opinion of this council such a scheme is not needed in Colehill.'

Disfiguring Advertisements

The County Council had asked parishes to assist in the prevention of disfiguring advertisements, hoardings and indiscriminate 'fly-posting'. Resolved to inform County Council that at present there appeared to be no cause for complaint but they would take action if necessary. *Minutes of 28th January, 1938*

~ World War Two ~

1939

Coffee Tavern requisitioned by the army. The Parish Council had to meet elsewhere.

Second World War 1939-45

The Quarterly Meeting was to be dispensed with and 'any matter of importance shelved for the duration of hostilities'. An Emergency Committee was formed of the Chairman, Vice-Chairman and Mr. C. R. Hoy with power to call a meeting of the whole council at any time.

Minutes of 4th October, 1939

Pig-keeping

A Special Meeting endorsed the Ministry's request that pig-keeping should be encouraged.

Minutes of 11th January, 1940

Scrap Iron Collection

The Scrap Iron collection was going well but the Ministry of Supply was failing to collect it from the dumps.

Precautions against Invasion

The word 'Colehill' had been removed from the War Memorial and the names on roads and direction posts were to be blackened. *Minutes of 4th July, 1940*



Jenny Down (near Cobbs Road) 1941, a water colour by Rev. Stote-Blandy, vicar 1918-46.

Post-War Housing

In response to enquiries from the District Council the Parish Council replied that 'none were required since 16 had been built pre-war, in excess of the 6 asked for, and people came from outside the parish to occupy them'.

Minutes of 16th March, 1943

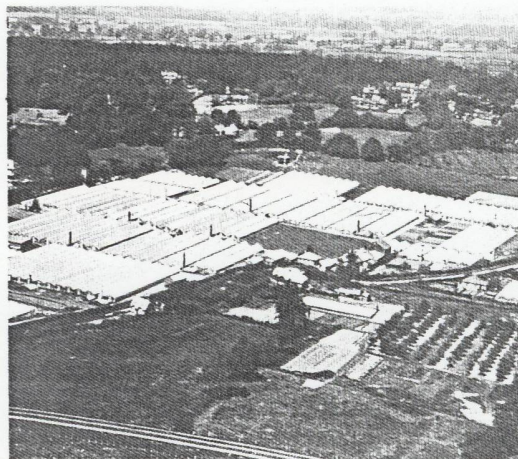
1944

Prior to Normandy landings, American troops camped on Jenny Down, artillery and tanks parked in grounds of Beacroft House and Highland Road.

© Priest's House Museum



Nisbet's electrical repair shop at the corner of Beacroft Road and Wimborne Road, used as a 'PX' for U.S. troops where they could buy cigarettes and other luxuries, unobtainable in war-time England. After the war it became Colehill Shoe Repair Service.



Leigh Vineries with the railway in the foreground. The thatched cottage between the glasshouses and the railway was later destroyed in an air raid.

1940

- Troops billeted compulsorily in village or under canvas in school playing field, and Northleigh House and its grounds.
- The Jockey House used as a canteen for the troops.

1941-3

- A few bombs dropped near Hayes Lane and Leigh Lane and a landmine near The Horns Inn.
- Leigh Vineries and Jenny Down (present St. Michael's Middle School grounds) used for parking tanks.

Fire-fighting

Reported that 'on 9th January, incendiary bombs were dropped on two thatched cottages at Leigh Common. The Wimborne Urban Fire Brigade arrived first on the scene but refused to take any action because the cottages were outside the Urban Boundary', (The Rural District brigade eventually arrived).

Minutes of 7th February, 1941

© Priest's House Museum



Beacroft House and 32 acres of grounds used for billeting U.S. troops and a park for American artillery prior to the Normandy landings 1944.

1945

End of war: 8 names added to the War Memorial

~ The Post-War Years ~

Resumption of Parish Council Elections 14th April, 1946

1946

- * House refuse collection - once every 5 weeks!
- * Parish Council still looking for a site for a recreation ground

1947

- * Council houses built at Glynville
- * Fund started by 'Welcome Home and War Memorial Committee'

1948

Council opposed proposal by Bournemouth to take over village



The Post Office cross-roads, 1940's-50's

© Priest's House Museum

Council Housing

Proposal by Rural District Council to build 50 council houses and a new road on Cannon Hill, opposed as 'not necessary to the needs of the parish and these cottages would spoil one of the few remaining beauty spots in the district with its commanding views and would be in danger from gorse fires in the summer'. *Minutes of 18th July, 1953*

Boundary Changes

Responding to the County Council's decision to carry out a review of Parish boundaries resolved (among others) 'that the "Estate" known as Leigh Pond bequeathed to the RDC in 1935 should be handed back to the Urban District, together with its contents.' *Minutes of 8th December, 1953*

1954

Council houses built at Fryer's Copse

Loss of Resident Policeman

Recording of meeting by BBC and extracts broadcast on the West of England Home Service on 1st February on Council's objections to resident policeman's duties being transferred to Wimborne and Colehill being policed as part of the Holt beat. *Minutes of 29th January, 1957*

1960

Influx of newcomers. Building of new estates at Park Homer, the Vineries, Pilford Heath throughout the 60's and into the 70's either side of Middlehill Road and at Highland Park.

1964

Railway closed to passenger traffic (following Beeching Report)
Population 2,800

Public Library

A request for a mobile public library was to be made. (This was refused). *Minutes of 25th February, 1964*

Branch Library

Promise of Branch Library by 1966.
Minutes of 3rd November, 1964

Footpaths

Resolved that the Clerk draw to Police's attention the shooting which had been taking place during the evenings in the vicinity of Ginnydown adjacent to the public footpath.
Minutes of 26th May, 1964

1950

Building of Council houses at Marshfield

Village Hall

Agreed in principle that the 'Welcome Home and War Memorial Fund' should be expanded to allow for provision of a Village Hall. *Minutes of 27th March, 1950*

Recreation Ground

The Ministry of Health had sanctioned reasonable expense for the Festival of Britain.
Proposed that a play ground for children should be created.
Minutes of 28th March, 1951

Coronation of Elizabeth II

Correspondence with Wimborne UDC re linking up as on former such occasions to celebrate the Coronation of Elizabeth II in 1953. *Minutes of 18th July, 1952*

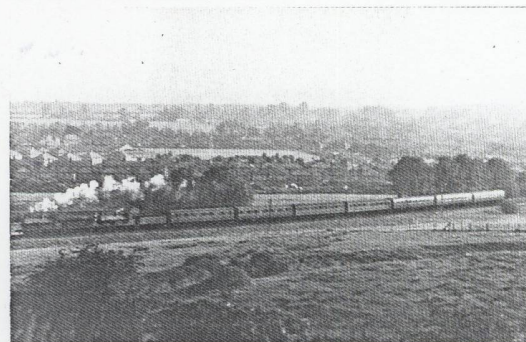
Boundary Changes

Wimborne UDC requested the alteration of boundaries to include the whole of Colehill. *Minutes of 18th July, 1952*

Rural District Council's counter proposal that Wimborne be amalgamated to form 'a single unit of local government', supported. *Minutes of 13th March, 1953*

George VI's Memorial Fund

The Clerk reported that £1 19s 4^d had been collected in the Parish for the RDC's George VI's Memorial Fund.
Minutes of 13th March, 1953



View from Northleigh Lane bridge, looking towards Leigh Road houses and playing fields, Wimborne.
Bournemouth to Cardiff through train. 1952

1958-9

Street lighting, debated for 60 years, eventually installed.

Opposition to Public House

Resolved that the Council strongly support the petition of 128 local residents objecting to the proposal to convert 'Beechwood' opposite the War Memorial to a public house.
Minutes of 17th January, 1961.

The Ministry of Housing and Local Government had allowed the appeal by Hall and Woodhouse for conversion of Beechwood. *Minutes of 22nd January, 1963*

The Local Licensing Committee had refused the licence.
Minutes of 5th March, 1963

1965

Winston Churchill, public house opened (Leigh Common)

Recreation Ground

Entrance to proposed open site blocked by houses being built by railway cottages in Hayes Lane.
Minutes of 7th December, 1965

Recreation Ground

Donation of five acres of land by Major Hanbury-Tracy-Domville to be developed as Oliver's Playing Fields plus three and a half acres of preserved woodland.
Minutes of 27th February, 1967

~ The Last Twenty-Five Years ~

Women Councillors

1971

- * First women councillors elected since 1928 - Mrs. B. Huggins and Mrs. D. M. Watson

1971

- * St. Michael's Middle School (9-13 years) opened

1972

- * Colehill Cricket Club became Colehill Sports and Social Club.
- * Hayeswood First School opened.

1973

- * St. Catherine's R. C. Primary School opened
- * Population 5,590

1974

- * Branch Library building opened
- * Beacroft Special School built (transferred from Wimborne)

1975

- * Olivers Park Play Area opened



Cutting from *The Bournemouth Evening Echo*, 23rd April, 1977

'Village Green' - Commons Registration

Hearing underway for application to register the triangle of land on which the War Memorial stands as a Village Green. The National Trust had intimated they would give favourable consideration to Parish Council being granted a Management Agreement on the land in the near future.
Minutes of 4th December, 1984

A formal offer from the Kingston Lacy Estate to lease the War Memorial 'triangle' and Kyrchil Corner for 15 years at £20 per annum was accepted.
Minutes of 25th November, 1985

Youth Club Building

Provision was to be made in the 1993/4 estimates for commencement of a Building Fund for extra accommodation for the Youth Club. (At present the Memorial Hall is used).
Minutes of 12th January, 1993

Doctor's Surgery

A Questionnaire is to be distributed to assess the need for a surgery in Colehill. *Minutes of 9th February, 1993*

Doctor's Surgery

Resolved that 'the Dorset Health Commission be advised that this Council is of the opinion that surgery facilities are required in Colehill'. *Minutes of 1st August, 1995*

Recreation Ground

Petition from 248 residents of Hayeswood Estate for children's playing area, 'Olivers Park' in 1972/3 Building Estimates.
Minutes of 25th January, 1972.

Village Hall

Provision for Memorial Hall in 1974/5 estimates.
Minutes of Annual Meeting, 1973

Recreation Ground

Gift of land for Olivers Park formally accepted.
Minutes of 26th November, 1974

Village Hall

Provision for Memorial Hall in 1975/6 estimates.
Minutes of 25th March, 1975

1977

Memorial Hall eventually built near old village school (now Colehill First)

Silver Jubilee Celebrations

Parish suggestions for celebrations withdrawn as schools and Parent/Teacher Associations already committed to their own arrangements. *Minutes of 12th January, 1977*

South-East Dorset Structure Plan (adopted in 1978)

The Plan covered the period 1976-96 but already the rate of house-building was exceeding the original provision. Therefore it was resolved:-

- to oppose any relaxation of limits of the Green Belt and continue to oppose any attempts to violate these boundaries.
- to require the Planning Authority to examine more critically the density of development of the land remaining.
- to support rigorous efforts to maintain the standard of properties and high quality building with particular emphasis on landscaping.

Minutes of 3rd July, 1984

Recreational Facilities

Special Meeting, re lack of recreational facilities for children, with the public and the District Council's Amenity Officer. Olivers Park was underused and neglected. Various other sites were suggested for extra facilities.
Minutes of 11th September, 1985

The Amenities Sub-Committee recommended that £2,000 be made available in the 1986/87 estimates as a contribution to development of the 'Triangle' and that the District Council should be asked to provide safe play areas on the Bridleway Park estate. *Minutes of 25th November, 1985*

The West District Planning Officer indicated that the original open spaces requirements - Olivers Park and the 'Triangle' - remained. Extra areas must be purchased at market value or by negotiation with landowners or builders.
Minutes of 19th March, 1986

Memorial Hall

Improvements to the Hall were reported as progressing.
Minutes of 27th April, 1993

1995

Refurbishment of Olivers Park Play Area.

~ The Parish Council today ~

Clerks to the Parish of Colehill:

1896-1996

1896 Mr. Charles Munckton
1923 Mr. Alfred Maton
1955 Mr. Merrick Jackson
1974 Mrs. Janet Stokes

1896

Recurring Subjects of Concern at the Beginning of the Century:
Allotments
Footpaths
Leigh Pond
Recreation Grounds
Mrs. Osborne's Ditch

1996

Recurring Subjects of Concern at the End of the Century:
Planning
Traffic and Parking
Recreation Grounds
Crime Prevention/Vandalism
Village Hall

Facts and Figures 1996

Area of Colehill Parish = 2,401 acres
Population 1994 = 7,180
There are 15 Parish Councillors

Things Parish Councils can do:-

Communications

1. Provide car parks (to protect amenities so people park away from village greens and verges).
- *2. Provide street lights on footways.
3. Acquire rights of way (in trust) and look after them.
4. Create new public footpaths e.g. to a local beauty spot or across fields with the permission of the landowner.
5. Put up warning and information signs.
- *6. Provide seats and bus shelters.

Health

1. Provide public conveniences.
- *2. Clean out ponds or ditches.
3. Provide public washhouses and launderettes.
- *4. Provide litter bins but must arrange to dispose of the contents.

Outdoors

- *1. Arrange for allotments to be available for local people.
- *2. Provide facilities for sports and recreation. This can include pitches, swimming pools, camp sites, riding schools etc. and other facilities e.g. parking places and cares.
3. Plant roadside verges with bulbs etc. with permission of the Highway Authority.
- *4. Buy land and lay it out for public open space or a Village Green.
5. Own or look after any Common Land.

Buildings

- *1. Build and equip a Village Hall or Sports Centre.
2. Provide a public clock.

Entertainment, The Arts and Tourism

1. Provide facilities for dancing, maintain a band or orchestra or support local arts and crafts.
2. Encourage visitors by providing recreation facilities, trade fairs or conferences.
3. Erect a flag pole.

Consultation

- *1. Parishes can ask to see all planning applications for their area.
- *2. Parishes may make comments to the District Council about items such as byelaws, names for new streets etc.

Burials and Cremation

- *1. Parishes may provide or contribute towards burial facilities and crematoria.
- *2. Provide a War Memorial.

Education

- *1. Parishes have the right to appoint Governors to First Schools

* Responsibilities undertaken by Colehill Parish Council



Ted Phillips. Nigel Samson. John Bell
David Blake. Jim Balson.
Peggy Fripp. Barry Jackson. Janet Dover. John Warren.
Joe Williams. Gordon Divall. Tony Holloway. Janet Stokes (Clerk). Jeffrey Greenwood
(Not in photograph Don Wallace, Brian Lowe)

For help with and loan of materials, thanks to;
John Evans, George Gray, Brian Harman, Merrick Jackson, George Sadler, Betty Shiner, Irene Smart, Molly Whiley,
Barbara Willis, Priest's House Museum and East Dorset District Council.

More information can be found in George Sadler's book "Village on the Hill - the story of Colehill in Dorset"

Gwen Divall for Colehill Parish Council.