

Issue 4 Spring 2010

Colehillclarion

Local news from Colehill Parish Council

Welcome to the latest news from the parish

Tel: 887786

It is an objective of the Parish Council to promote Colehill as a community, to which residents can feel that they belong. To this end we introduced this newsletter, of which this is the fourth edition.

Last year we held the first ever Colehill Country Fair, a successful community event which we hope to repeat this year on the 15th of August. We have sponsored the Christmas Tree at St. Michael's Church and at Christmas just gone, we all enjoyed the singing from the school choirs and from the Brownies at the well-attended carol concert. We are also supporting the youth of Colehill through the substantial sums which we are raising to fund the building of the Colehill and Wimborne Youth and Community Centre.

In February this year Co.MaD held their 11th family pantomime in the Memorial Hall and raised £800 for the Salisbury based Cleft Lip and Palate Association (CLAPA).

I was pleased to attend the opening night of "The Barley Mow" under a new family management team of Steve and Sue Bardsley and their son Lee and daughter-in-law Hannah. They are committed to providing a community pub and the Parish Council continues to support our remaining country pubs.

There are lots of other people working in and for the community of Colehill (maybe one of them is you) but here at the Parish Council we are committed to improving the quality of life for all of our residents.

KD Johnson, Chairman

Win! Win! Win!

It's very rarely that we can report a situation where there appear to be winners all round but that's the way it looks at By-the-Way. The creation of a much sought after green open space in Colehill, a riverside walk along the Stour, and a tasteful housing development where factories used to be in Wimborne is the deal being discussed at East Dorset District Council.

The story goes back to 2000 when EDDC bought surplus land adjacent to By-the-Way on Leigh Road, Colehill, with the intention of turning it into a multi-sport recreation ground. The cost spiralled to over £3M making it impossible to afford. However, Flight Refuelling Ltd of Wimborne (FRL) are moving production to the east side of Brook Road, freeing up their existing site to be considered for housing development. As part of seeking planning approval they have to identify a compensating green area under the new environmental regulations. Hence the tortuous connection with By-the-Way.

The overall scheme, subject to public consultation and planning permissions being granted, is for FRL to fund the cost of developing By-the-Way field as a natural recreation area with a lake, grass play areas and surrounding tree plantations: the proposal also includes continuing a riverside walk from Brook Road eastward along the Stour. Taken with the development brief lodged with EDDC for the construction of attractive housing on the old factory site, this really does sound like a very worthwhile project that will benefit Colehill and Wimborne.

The proposed allotments for Colehill will integrate well with the By-the-Way development, from which they will be separated by a line of trees.



KD Johnson, far right, as you've never seen him before. Or, have you?

Rumpelstiltskin, February 2010

Inside this edition

General Election
Council Tax
Out of Hours Service
Be a Good Neighbour
Honey Bees
Entertainments and Events
And much, much more.....

**We're
twittering**

**[www.twitter.com/
colehillnews](http://www.twitter.com/colehillnews)**

**Keep up-to-date with events in Colehill at
www.colehill.gov.uk**

Tweet, Tweet!



Colehill Parish Council has taken another step into the modern age of the Web and is now releasing up-to-the minute news on Twitter. Cllr Susan Davies said, "We are always trying to find new ways of connecting to the resident and we expect this to be very popular with both youngsters and many of our silver surfers".

Find the latest news affecting Colehill by clicking on to www.twitter.com/colehillnews

Twitter will supplement the website and the newsletter so sign up now for regular updates..

Out-of-Hours Service

There has been a lot of headline news recently regarding the GP's Out-of-Hours service; some of it favourable but a lot of it quite negative. We contacted a Wimborne medical practice to find out what the situation is locally and it appears that all the practices in the area are signed up to NHS Dorset, which has the responsibility for providing out of hours medical services for the population of East Dorset.



The service is called "Dorset Out-of-Hours Medical Service" and details of how it works in our area can be found on their website www.swast.nhs.uk/services/outofhours.

There is also a link to a patient information leaflet which residents may find useful.

The most important thing to remember is if you are unwell, contact your local GP and you will automatically be connected to the Out-of-Hours service. In the case of a real medical emergency, don't hesitate: dial the emergency services on 999.

Grit Bins

The big freeze this winter left many residents concerned about the apparent lack of gritting in Colehill. Several requests for grit bins have been received by the Parish Council and the position regarding provision of bins will be reviewed in 6 months time and will be subject to funds being available to meet the demand.



Digital Switchover, how it could affect you

Our main transmitter is Rowridge on the Isle of Wight and that changes from analogue to digital in 2012, as does the relay at Winterborne Stickland. Although we are not affected at the moment it seems that a number of residents in other parts of the county are experiencing problems with reception of one or more Freeview TV channels since the switchover. This despite the promise made by Ofcom that if you could receive analogue programmes before, you should be able to receive digital after switchover.



The West and parts of the North of the county were due to have switched over by the end of March.

The Dorset Broadcasting Action Group (DorBAG – www.dorbag.org.uk) supported by the County Council & and other bodies in Dorset, has created a "TV Reception Problem Report" for residents to complete and return to DorBAG. Chaired by Oliver Letwin MP and Jim Knight MP, DorBAG will approach the heads of the appropriate Broadcasting Authorities, once they have enough solid data, to seek a solution to viewers' problems.

Information and troubleshooting tips can be found on the DorBAG website but the Parish Council will keep residents updated with any changes as we receive them.

General Election, are you registered to vote?

A general election to elect the new Parliament must be held no later than Thursday 3rd June 2010. At the time of writing, speculation is rife that it will be held on Thursday 6th May so time is running out if you want to make sure you play your part in the democratic process of electing the new national government.

If you are unsure, contact the Council's elections staff NOW as once the election is called it may be too late. If you are not registered they will send you a form which needs to be returned immediately.



Are you going to be away or are unable to get to the polling station?

Anyone can apply to vote by post, providing they are registered. A form will be sent out when you apply and this will need to be returned no later than 5pm, 11 working days prior to the election. As the date is still unknown a postal vote may not be the best option for you as you may be away when they are sent. In this case, appointing someone to vote on your behalf (a proxy) may be a better solution.

The proxy will be sent a letter informing them of your polling station where they can attend and cast your vote. If once you have appointed a proxy and you are at home and able to vote then, provided your proxy has not already voted on your behalf, you can cast your vote in the polling station as usual. All applications for proxy votes must be received by 5pm no later than 6 working days prior to the election.

If you wish to apply for any of the above or have any questions please call the elections office on **01202 639061**. Application forms for registration or voting by post or proxy are also available to download at www.aboutmyvote.co.uk

For Information

There will be new boundaries for the parliamentary constituencies within East Dorset based on the district wards.



Mid Dorset and North Poole Constituency covers:

All Colehill and Corfe Mullen wards and Wimborne Minster ward.

Polling Stations in Colehill:

The Memorial Hall or St. Michael's Church Hall depending on where you live. Check your voting card.

A Life Changing Experience



Wandering around the Boat Show in Southampton in 1996 I came across a big sign that said, "Join us in building the world's largest wooden tall ship". I was hooked, and enrolled there and then with the Jubilee Sailing Trust (JST). It was to change my life!

In 1978 the *Lord Nelson* was the first ship built by the JST, and it was designed to enable people of various levels of ability or disability to sail on equal terms with each other. Over the years the uptake has been so great that it was decided that another vessel was needed. The new ship would be built with the help of volunteers of mixed ability working alongside professional shipwrights. The volunteers' weeks 'pay' was claimed from the Lotteries Board and went towards the cost of building the ship. They built the hull using planks of Siberian Larch firmly cemented together with epoxy resin. It was my first experience of working with people with disabilities and it made me realise that disability does not define the person. They want to live as normal a life as possible and to enjoy the same challenges as others.



The ship was completed in 2000 and the Duke of York, the JST Patron, aptly named her the *Tenacious*. Both *Lord Nelson* and *Tenacious* have a permanent crew of 10 and can take up to 40 voyage-crew; twenty of whom can be physically disabled, including eight in wheelchairs.

The tall ships are based in Southampton and in the summer sail around the British Isles and northern Europe. In the winter they sail to warmer climes, usually the Canaries and the Caribbean. I have been privileged to participate and have sailed them on many occasions in the last fourteen years.

Branches of the JST can be found in the UK and Ireland. If you are interested in joining us, or to come sailing, details can be found on our website at www.jst.org.uk. I am Chairman of Poole Bay branch and we raise funds and carry out work in support of the JST. I look forward to seeing you at one of our fund raising events or maybe even onboard!



Mike, on the left, with fellow crewmates!

Mike Bartlett

Speed Limits on Northleigh Lane and Leigh Road

For more than ten years the Parish Council has been urging Dorset County Council to rectify the anomaly whereby the lower part of Northleigh Lane has an unrestricted 60 mph speed limit. The Council has pointed out the very dangerous cross roads where Beaucroft Lane and Leigh Lane join Northleigh, and also the unsighted exit from Leigh Common. There are also two unguarded footpaths that emerge onto the lane.

DCC has now proposed a 40 mph speed limit on this lower section, similar to that in operation on Leigh Road, Colehill. Cllr David Packer, who has been campaigning for the speed to be reduced, is disappointed that DCC will not accept his recommendation for 30 mph but continued opposition to the 40 mph proposal could mean putting it all back in the melting pot of DCC priorities

He has also been urging DCC to move the 30 mph restriction on Leigh Road further east beyond the Tops Nursery. This too has been rejected.

At the beach

Safety tips from Dave Brodie, QE Leisure Centre



- swim between red & yellow flags
- read Surf Conditions board
- if it's too rough, don't go in
- swim with a friend, not alone
- swim parallel to shore if swimming long distances
- swim in well lit areas so you can be seen
- leave water immediately if asked to do so by lifeguard

Council Tax - how do we compare?

We know that no-one likes paying tax but it's a fact of life and a burden we all have to bear. At the annual Parish Council meeting when we have to decide on the precept, we take seriously the Impact that any increase may have on local residents whilst at the same time acknowledging commitments that we have over the following financial year. The way we vote is on public record.

Looking at our near neighbours, we compare very favourably and only Holt Parish Council has set a lower precept.

Holt	£13.52
Colehill	£23.00
Ferndown	£41.38
Corfe Mullen	£51.86
Wimborne	£86.49

Traffic Calming

The speed survey will be taking place in June during the same week as the previous 2 surveys.

The stage 4 safety audit will take place once the full year's injury accident data is available and can take up to 3 months to complete. We will keep residents fully informed of the outcome.

Cycle Path

Good news! Looks like this long awaited scheme will be underway by the time you receive this latest newsletter.



Stripey Friends need our help

There is a severe decline in the bee population throughout the world and, as we depend on these tiny creatures to pollinate at least 1/3rd of the food we eat, their diminishing numbers could have a serious impact globally. In the UK alone, bees contribute £200m annually to the economy through pollination but as their numbers have halved over the last 20 years, the Co-Operative has launched a campaign called Plan Bee to encourage more people to get involved in bee keeping. Some urban areas have received funding from the Co-Op to set up bee keeping projects and the Co-Op is also inviting beekeepers to set up hives on its farms.

There are a lot of things that we can do to help bees and here are just a few of them:

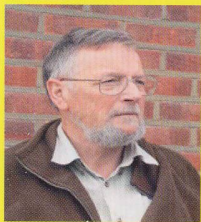
- 1) Plant wild flowers seeds and brighten up your garden at the same time and if you don't have a garden, plant seeds in a window box. The flowers provide essential nutrition for bees.
- 2) Create a shelter by allowing a patch of grass to grow long to provide bees with shelter from the rain
- 3) Provide water for bees to drink. This can be as simple as a shallow edged dish of water but put a few pebbles in it to help the bees climb out
- 4) Avoid pesticides
- 5) Protect swarms. If you see a swarm of bees contact your local beekeeping association to collect the swarm
- 6) Buy a bee box. It will help bees to shelter from the rain and encourage bees into your garden: it should also help your garden bloom.



For more information you can go to the Co-Op's Plan Bee website or The British Beekeepers Association to find out how you could become a beekeeper. The UK has approximately 44,000 beekeepers with over 95% being amateur.

It's easier to keep bees than you think!

Former Chairman resigns



It is with some sadness that we announce the resignation of Councillor John Gooch who has served the Parish with distinction for over ten years, and as Chairman between 2005 and 2007. John has also been chairman of the Finance and General Purposes committee and has played an active part on the Highways and Plans Committee.

John Gooch is married with two children and three grandchildren and has lived in Colehill since 1995. His other community involvements are as a member of the Colehill Memorial Hall Management Committee, committee member of the Friends of Colehill Library, wood warden for Cannon Hill Plantation and membership of Ferndown University of the Third Age and certain other local charities.



At the Pool

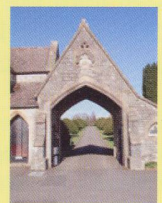
- obey the signs
- listen to the lifeguards
- stay away from deep end unless you swim well
- make sure water is clear before jumping in
- play safely and don't run around pool edge
- check the depth

A fine resting place for residents of Colehill



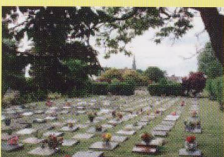
Wimborne Cemetery is situated in the Parish of Pamphill, and is financially supported by the Parish Councils of Pamphill & Shapwick, Colehill and Wimborne Minster's Town Council. The Cemetery was inaugurated in 1856 and contains more than 12,750 graves, including many well-known names.

There are many trees in the 20 acre site, together with two grade 2 listed Chapels and a Lodge. It is a traditional Cemetery and with many benches to rest on, is a lovely place to sit and reflect. A team of full time staff maintain the grounds to a high standard and the Cemetery provides for both full burials and interment of ashes. Both Parishioners and Non-Parishioners may be interred in the Cemetery and this includes residents from Colehill. Plots can be purchased in advance and will be maintained for a term of 100 years. Purchase of a plot will entitle the owner, or his/her heirs on payment of an additional fee, to place a memorial headstone or cremation tablet on the site.



The first interment was of a two year old child, Walter Noah Cull, of the union workhouse, Wimborne on the 1st April 1856. There is no headstone to denote the position of the grave. The fourth interment was of John Eaton aged 41.

He was the builder of the chapel and died after being thrown from his horse whilst inspecting work at the Cemetery! His passing is marked by a Portland Headstone near the chapel and on a tablet inside. We recommend a visit to this peaceful and beautiful Cemetery; the staff on site are happy to answer any questions. The Cemetery is open every day 9.00am to 5.00pm October to March and 9.00am to 9.00pm April to September. Telephone: 01202 882403.



Let's be Good Neighbours

This last winter has been the most severe for over 30 years and it certainly highlighted the need for us to consider our neighbours, particularly the elderly and more vulnerable members of our community. Clearing pathways, doing some shopping and just knocking on the door to check that your neighbour is ok has been some of the ways in which we have helped each other during this long winter period.

Spring has finally arrived and it's time for us to consider ways in which we not only help our immediate neighbours but the community as a whole. Littering is one of the most talked about topics in Colehill and it is certainly one of the things that the Parish Council receives regular complaints about. You may already know 'Littering in the Village Centre' is one of the three priorities identified through Colehill PACT (Partners And Communities Together) engagements within the community. Together with our local Police, the Parish Council is supporting an initiative to keep Colehill litter free.



"Adopt a Spot" Campaign

Residents, either singly or groups, can adopt a specific location that they will 'litter pick' as and when needed. This is a great way to get the children involved in their neighbourhood.



The Parish Council will loan groups litter picking equipment including fluorescent vests and black rubbish sacks

Volunteers will receive a copy of a risk assessment. The Parish Council's public liability insurance covers volunteers.

"DESIGN A POSTER" COMPETITION



Colehill Safer Neighbourhood Team is launching a poster competition in April for pupils at the three first schools in Colehill. Children are being asked to design posters encouraging people not to drop litter and the winning designs will be used for a new anti-litter poster campaign within Colehill. This is part of ongoing work to raise awareness regarding the problem of littering and the effect it has in our neighbourhood.

The children can interpret the theme in any way they wish; for example, the poster might depict a favourite spot in the village, with and without litter. They may even wish to create their own litter-eating bugs as part of the design!

Alongside this competition each First School will receive a visit from the Safer Neighbourhood Team and the Safe Schools and Communities Team who will take an active part in their school assembly.

We are hoping the competition will encourage pupils to think about the problems caused by dropping litter and remind them not to do this themselves.



Household and Garden Refuse

It's the time of year where after months of relative inactivity in the garden, we are now preparing for the growing season and clearing up all the detritus left after the winter. For many of us it will be dealing with leaves and fallen branches but before we rush to light the bonfire, please check the piles of leaves for the many small creatures who may have sought refuge during the winter months and in particular, hedgehogs.



Although there are no byelaws regarding bonfires, the Environmental Health department recommends that we act responsibly when burning garden waste. Guidelines are that garden material should be dry, the weather conditions should be still and bonfires should not be too frequent when they could be considered a nuisance. We should avoid burning regular household waste such as vegetable peelings: these we could consider composting along with our garden waste.



East Dorset District Council can supply large green sacks at £1.00 each which can be used for disposing of garden refuse: these can be put out with the weekly black sack household waste collection. The alternative to dispose of garden and household material is still at Brook Road.

Please pick up after pooch



The majority of dog owners are responsible but there is a significant minority who do not think it is their duty to pick up after their pet. Dog fouling is unpleasant as it affects so many people and is particularly serious in areas where children play. There are plenty of dog litterbins in and around Colehill so we do ask you to pick up after your pooch and dispose of the waste in the bins provided. Tossing the bags into the hedgerow is not an acceptable alternative and can be hazardous to wildlife!



NB: Please don't dump your garden waste in woodland - ours, the Forestry Commission's or anyone else's - you may think that it won't do any harm, but you may be introducing invasive foreign plant species, insects, pesticides, herbicides or fertilisers into a wild environment, with unpredictable and mostly undesirable consequences. Your action is illegal fly-tipping, just as much as if you were to dump your old fridge in a layby, and the penalties are the same. It is a serious criminal offence to fly-tip. This is an on-going problem in the area and we urge residents to report any incidences to either EDDC or the Parish Council.

Dates for your diary

April

17 Breakfast at Tiffany's
7.30pm Colehill Memorial Hall
(see advert)

23 Ladies Night, 7.30pm,
St. Michael's School

May

9 Triathlon, St Michael's School

15 Simply Sixties, Colehill
Memorial Hall Tickets £7.00,
Tel: 887084 (see advert)

22 Let's Make Music, Colehill
Memorial Hall (see advert)

June

12 Minster Green Fair,
Wimborne Folk Festival

13 Triathlon, St Michael's School

19 Summer Fair
Hayeswood School, 2pm

Strawberry Fair,
Pamphill School, 11am

25 Summer Fair,
St Michael's School, 6pm

26 Summer Fair,
St Catherine's School, 2pm
Open Day, Reef Youth Club

July

10 St. Michael's Church Fete, 2pm

August

15 Colehill Country Fair,
St Michael's School (see advert)

An evening of sixties music
and entertainment at
Colehill Memorial Hall.

Sat 15th May

Doors open 7 for 7.30

Tickets £7 to include nibbles
and a sixties quiz

Available from 01202 887084

Bring your own drink
and glasses

Sixties dress optional



Breakfast at Tiffany's Film Premier Saturday 17th April, 7.30pm Colehill Memorial Hall

Colehill is having a special screening of the Oscar winning 1960's film, Breakfast at Tiffany's, starring the wonderful Audrey Hepburn and George Peppard.



To make the evening really special and to bring a bit of Hollywood glamour to Colehill, wear something black and white on the night (ladies, dress in true Hollywood style with your LBD and lots of sparkle) and enjoy Champagne cocktails and canapés at the post-screening party. All ticket holders will be entered in to a FREE prize draw for a special Breakfast at Tiffany's goody bag.



Doors open at 7pm when you can purchase a delicious Barford Farm Ice Cream, with the film starting at 7.30pm. Tickets cost £6 in advance (£7 on the night) and can be purchased from Wimborne Tourist Information Office or by telephoning Barbara Gooch on 01202 882590. Due to anticipated demand, early purchase of tickets is recommended.

This "red-carpet" event is being organised by the management committee of Colehill Memorial Hall to celebrate the arrival of the new upholstered chairs and to raise funds for more to complete this part of the refurbishment of this well-used village facility.

Let's make music!

You are invited along to an afternoon of singing in the Memorial Hall on Saturday 22nd May. This informal, fun session will be led by professional choir master Stephen Gregson, who is a choral conducting trainer for Sing for Pleasure (see his full bio. on the website).



There has been a lot of interest in establishing a community choir in Colehill and this will be your opportunity to sing along side your family, friends and neighbours. Absolutely no experience is needed, there will be no auditions, you don't have to be able to read music, all you need is enthusiasm! If this session proves to be popular among residents then it will give us a springboard to set up our very own community choir. We will be able to meet on a regular basis to sing a wide variety of popular songs, both old and new. If anyone has experience in leading a choir and/or in playing the piano and would like to get involved, then please let me know.

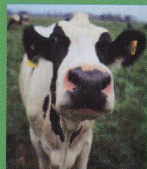
There will be a small one-off charge of £3.00 per person to cover the costs, which will include light refreshments during the break. The session will start at 2.30pm and end at 5pm and is open to all ages and abilities. To reserve your place, contact Susan Davies on 01202 842311 or email sdavies@colehill.gov.uk by 7th May.



Merley has just started a choir and has up to 90 people a week attending on a regular basis. Come on Colehill, let's see what we can do!

Editor: Susan Davies Comments: CPC, 1 Hornbeam Way, Colehill, BH21 2QE
Tel: 01202 887786 info@colehill.gov.uk

Editorial Committee: Keith Baker, KD Johnson, David Packer Parish Clerk: Tracey Paine



Colehill Country Fair

Sunday 15th August,
St Michael's School 11am - 4pm



A celebration of Dorset arts, crafts and food. If you design, make and produce your own products and would like a stall at the fair, please contact **Susan Davies** on 01202 842311 or email countryfair@colehill.gov.uk. All proceeds from the fair will be donated to local charities. We would also like to hear from local clubs and societies to join our "communities" section.